

THE POWER OF

REDARC®

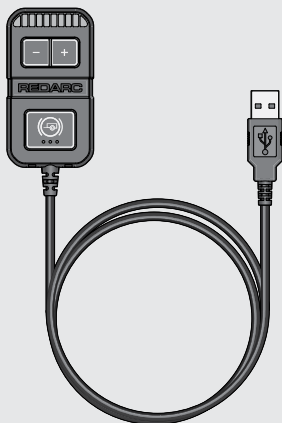
INSTALL GUIDE

TOW-PRO LINK™

Adhesive Mounted USB Remote

MODEL:

- EBRHX-ADH-RH



CONTENTS

WARNINGS & SAFETY INSTRUCTIONS	3
OVERVIEW	4
Parts	4
INSTALLATION – CONNECTING TO POWER	5
INSTALLATION – MOUNTING	5
Choosing a Mounting Location	5
Mounting Steps	6
PAIRING TO THE MAIN UNIT	7
Manual Pairing Steps	7
OPERATION	8
TROUBLESHOOTING	8
TECHNICAL SPECIFICATIONS	9
General Specifications	9
Dimensions	10
COMPLIANCE AND STANDARDS	11
WARRANTY	13

LOOKING FOR MORE INFORMATION?

This Install Guide includes safety information and installation instructions relating to the **EBRHX-ADH-RH USB Remote** only.

For installation instructions for the Tow-Pro Link Main Unit, refer to the supplied Install Guide.

For operation instructions, important safety information, specifications and compliance information for the Tow-Pro Link system, refer to the User Manual.



For the latest version of this document and any available translations, visit the REDARC website:
www.redarcelectronics.com/downloads

WARNINGS & SAFETY INSTRUCTIONS

SAVE THESE INSTRUCTIONS — This manual contains important safety instructions.

Do not operate the product unless you have read and understood this manual. The products referenced in this manual must be installed by a suitably qualified person.

Disclaimer: REDARC accepts no liability for any injury, loss or property damage which may occur from the improper or unsafe installation or use of its products.

⚠ WARNING

1. Any attempt to disassemble/reassemble the Remote or make unapproved repairs or modifications will void the warranty and the user's authority to operate the Tow-Pro Link.
2. Do not mount the Remote in a location that may affect the activation of vehicle air-bags.

⚠ CAUTION

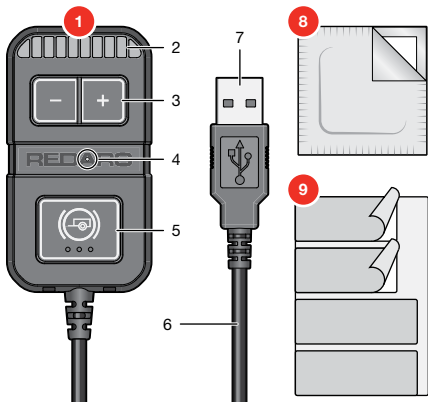
3. It is the installers responsibility to ensure that the installation complies with local safety standards for dashboard mounted devices.

OVERVIEW

The EBRHX-ADH-RH USB Remote wirelessly connects to and controls the Main Unit of the Tow-Pro Link electric brake controller.

It is powered via USB and can be mounted to the dashboard using the supplied non-permanent, reusable adhesive tape.

PARTS



1. USB REMOTE

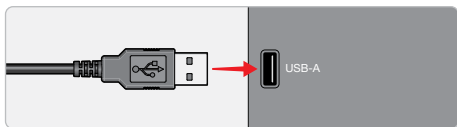
- 2. LEDs
- 3. Minus/Plus Buttons
- 4. Light Sensor
- 5. SwayStop Button
- 6. Power Cable
- 7. USB-A Connector

8. ALCOHOL SWAB

9. REUSABLE ADHESIVE TAPE (x4)

INSTALLATION – CONNECTING TO POWER

Plug the USB connector into a powered USB-A socket.



INSTALLATION – MOUNTING

⚠ WARNING: Do not mount the Remote in a location that may affect the activation of vehicle air-bags.

⚠ CAUTION: It is the installers responsibility to ensure that the installation complies with local safety standards for dashboard mounted devices.

NOTICE: When removing the Remote Head, lightly twist the Remote to release the Reusable Adhesive Tape. Pulling on the Remote with force may cause damage to the vehicle trim/mounting location.

CHOOSING A MOUNTING LOCATION

Choose a mounting location that meets the following requirements:

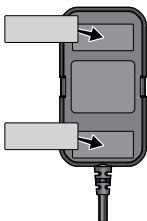
- ✓ The Power Cable on the Remote reaches the USB-A socket you plan to connect it to.
- ✓ The mounting surface is flat with minimal curvature for optimal adhesion.
- ✓ When mounted, the Remote's Power Cable will not obscure or obstruct instruments required to drive the vehicle.
- ✓ Is within easy reach of the driver for easy operation and instant access in emergency situations.

MOUNTING STEPS

1. Make sure the mounting surface and the back of the Remote are clean and dry — clean off any grease or dust using the supplied alcohol swab.



2. Carefully position a piece of the supplied Reusable Adhesive Tape in the marked areas on the back of the Remote. Press firmly all over. Repeat with a second piece of tape.



3. Peel off the backing paper from both pieces of tape.



4. Firmly press the Remote onto the mounting location for approximately 10 seconds.

Two spare pieces of tape are included to replace the tape if it becomes worn or damaged.



PAIRING TO THE MAIN UNIT




The Tow-Pro Main Unit and Remote are supplied factory-paired when purchased as a complete system, so Manual Pairing is not needed.

If the Main Unit or Remote were purchased separately or as a replacement, they must be paired before use.

MANUAL PAIRING STEPS

Before you begin the pairing process, make sure:

- ✓ the trailer is attached;
 - ✓ the vehicle is completely stationary and the hand brake is applied;
 - ✓ accessories/ignition is turned on (i.e., the Main Unit and Remote have power);
 - ✓ the Remote starts, at power-on, with no LED indication;
 - ✓ the Main Unit is not connected to another Remote.
1. Pump the vehicle brakes 3 times to enter pairing mode on the Main Unit. When pairing mode is active, the trailer's brake lights will flash slowly.

NOTE: The Main Unit will exit pairing mode if no device is found within 10 minutes, or if the vehicle moves. If this happens, you need to unplug the trailer plug from the vehicle and then reconnect it before entering pairing mode again.
 2. On the Remote, press-and-hold the SwayStop Button  and Minus Button  at the same time until the LEDs begin to flash blue. Release the buttons.
 3. The Remote LED will continue to flash blue as it attempts to connect to nearby devices.
 4. When the Main Unit establishes communication with the Remote, the LED will begin to flash blue faster.
 5. To confirm pairing, immediately press-and-hold the vehicle brakes, then press-and-release the SwayStop Button  once. When successfully paired, the LEDs will remain solid blue (if in Everyday/Proportional mode) or solid green (if in Manual Off-road/User Controlled mode). Release the vehicle brakes.
 6. If this process fails at any stage the LEDs will turn off. Return to step one and try again.

OPERATION

For operation instructions, refer to the User Manual supplied with the Main Unit.

The User Manual can be downloaded at:

www.redarcelectronics.com/downloads

TROUBLESHOOTING

For troubleshooting information, refer to the User Manual.

The Remote does not stick to surfaces

Wipe the reusable adhesive with a damp cloth to clean off any dust. Make sure the mounting surface is clean and dust free.

Two spare pieces of tape are included to replace the initial two pieces of tape if they become worn or damaged.

TECHNICAL SPECIFICATIONS

GENERAL SPECIFICATIONS

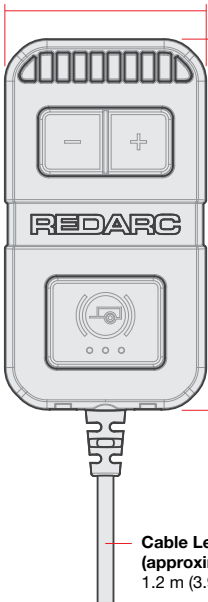
	EBRHX-ADH-RH
Nominal voltage range*	USB 5 V \approx
Operating voltage range*	USB 4.5 to 5.5 V \approx
Operating current	500 mA max.
Standby current	5 mA max.
Operating temp	-40°C to +60°C -40°F to 140°F
Weight	52 g (1.8 oz)
Main Unit Compatibility	EBRHX-MU, EBRHX-MU-NA
Braking Levels	0 (off) to 10 (0.5 increments)
Waterproof	No
*Voltages specified are \pm 100 mV.	

DIMENSIONS

9.5 mm
(0.4")



38 mm
(1.5")



70.1 mm (2.8")

**Cable Length
(approximate)**
1.2 m (3.9')

COMPLIANCE AND STANDARDS

Standards



ICES

CAN ICES-003 (B)/ NMB-003(B)

FEDERAL COMMUNICATIONS COMMISSION (FCC) STATEMENT

This device complies with part 15 of the FCC Rules. Operation is subject to the following two conditions: (1) This device may not cause harmful interference, and (2) this device must accept any interference received, including interference that may cause undesired operation.

FCC Statement — Class B

Note: This equipment has been tested and found to comply with the limits for a Class B digital device, pursuant to part 15 of the FCC Rules. These limits are designed to provide reasonable protection against harmful interference in a residential installation. This equipment generates, uses and can radiate radio frequency energy and, if not installed and used in accordance with the instructions, may cause harmful interference to radio communications. However, there is no guarantee that interference will not occur in a particular installation. If this equipment does cause harmful interference to radio or television reception, which can be determined by turning the equipment off and on, the user is encouraged to try to correct the interference by one or more of the following measures:

- Reorient or relocate the receiving antenna.
- Increase the separation between the equipment and receiver.
- Connect the equipment into an outlet on a circuit different from that to which the receiver is connected.
- Consult the dealer or an experienced radio/TV technician for help.

This equipment complies with the FCC and ISED Canada radiation exposure limits set forth for an uncontrolled environment. This equipment should be installed and operated with a minimum distance of 20 cm between the radiator and all persons during normal operation.

WARNING: Any changes or modifications not expressly approved by the grantee could void the user's authority to operate this equipment.

FCC ID: 2BAH6-EBRHXADHRH

Details of the Responsible party:

REDARC Corporation, 1701 Northwest Highway, Suite 100
Grapevine TX, 76051, USA
Phone: +1 (704) 247 5150

INDUSTRY CANADA (IC) COMPLIANCE NOTICE

This equipment complies with the FCC and ISED Canada radiation exposure limits set forth for an uncontrolled environment. This equipment should be installed and operated with a minimum distance of 20 cm between the radiator and all persons during normal operation.

ICES Statement – Intentional Transmitter

This device complies with Part 15 of the FCC Rules and with Innovation, Science and Economic Development Canada's licence-exempt RSS(s). Operation is subject to the following two conditions:

1. This device may not cause interference.
2. This device must accept any interference, including interference that may cause undesired operation of the device.

IC: 30290-EBRHXADHRH

AVIS DE CONFORMITÉ D'INDUSTRIE CANADA (IC)

Cet équipement est conforme aux limites d'exposition aux rayonnements de la FCC et ISED Canada établies pour un environnement non contrôlé. Cet équipement doit être installé et utilisé avec une distance minimale de 20 cm entre le radiateur et toutes les personnes pendant le fonctionnement normal.

Déclaration du CIEM – Émetteur intentionnel

L'émetteur/récepteur exempt de licence contenu dans le présent appareil est conforme aux CNR d'Innovation, Sciences et Développement économique Canada applicables aux appareils radio exempts de licence. L'exploitation est autorisée aux deux conditions suivantes:

1. L'appareil ne doit pas produire de brouillage.
2. L'appareil doit accepter tout brouillage radioélectrique subi, même si le brouillage est susceptible d'en compromettre le fonctionnement

IC: 30290-EBRHXADHRH

WARRANTY

For full warranty terms and conditions, visit the Warranty page of the REDARC website at www.redarcelectronics.com/warranty.

AUSTRALIA, NEW ZEALAND & EUROPE

REDARC Electronics Pty Ltd, 23 Brodie Road (North),
Lonsdale SA 5160, Australia

Australia..... +61 8 8322 4848
New Zealand..... +64 9 222 1024
UK & Europe..... +44 (0)20 3930 8109

NORTH AMERICA

REDARC Corporation, c/o Shallco, Inc., 308 Component Dr.,
Smithfield, NC 27577, USA

USA..... +1 (704) 247 5150
Canada..... +1 (604) 260 5512
Mexico +52 (558) 526 2898

CHECKING THE PRODUCT SERIAL NUMBER

The product serial number is located on the back of the Remote and on the product packaging.

NOTES

PATENTS: This product may have patent(s) granted and/or pending, design and eligible layout rights may also subsist.
Visit www.redarcelectronics.com/patent.

Design, product configuration and technical specifications are subject to change without notice. | Copyright © REDARC Electronics Pty Ltd. All rights reserved. | REDARC®, THE POWER OF REDARC®, Tow-Pro® and Tow-Pro Link™ are trademarks of REDARC Electronics Pty Ltd.

REDARC Electronics Pty Ltd | ABN 77 136 785 092
REDARC Electronics Pty Ltd, 23 Brodie Road (North),
Lonsdale SA 5160, Australia



Tech Support

1300 REDARC (1300-733-272)

Australia

+61 8 8322 4848

New Zealand

+64 9 222 1024

UK & Europe

+44 (0)20 3930 8109

USA

+1 (704) 247-5150

Canada

+1 (604) 260-5512

Mexico

+52 (558) 526-2898